



# CROWN MOUNTAIN SOLUTIONS

# PRODUCT AGENCY CATALOG

Power Equipment · Transformers · Switchgear · Data Center Infrastructure

Version 1.0 · 2026

www.crownmntns.com · info@crownmntns.com · +1 (915) 200-6779

## AUTHORIZED DISTRIBUTION PARTNERS

JST Power Equipment

Pearl Electric

Jiangsu Huapeng  
(JSHP)

Delta Electronics

## SECTION — ABOUT CROWN MOUNTAIN SOLUTIONS

*Your Cross-Border Power Equipment Supply Partner*

Crown Mountain Solutions is a North America–focused supply and solutions company connecting leading Chinese manufacturers with utilities, data centers, industrial operators, and advanced technology companies across the United States and Canada.

Built on deep industry relationships, proven technical experience, and cross-border execution capabilities, we help customers secure critical equipment faster — with stronger delivery confidence and better supply-chain control.

|                     |  |
|---------------------|--|
| <b>Office</b>       | 5900 Balcones Drive STE 100, Austin, TX 78731, USA   |
| <b>Website</b>      | www.crownmtns.com  |
| <b>Email</b>        | info@crownmtns.com   |
| <b>Phone</b>        | +1 (915) 200-6779  |
| <b>Capabilities</b> | Transformer sourcing · Switchgear · PDU / Busway · EV charging infrastructure · Chip & communication modules |
| <b>Standards</b>    | IEEE / ANSI / IEC / UL / CSA / NEMA — all products sourced with North America compliance in mind             |
| <b>Quote SLA</b>    | 72-hour quote turnaround target for standard configurations  |

### CERTIFICATIONS & COMPLIANCE STANDARDS

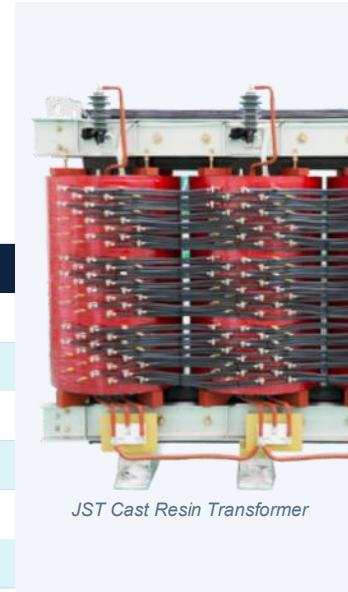
Selected products from our manufacturing partners may support international testing, certification, or compliance documentation, including CE, UL, CSA, KEMA, DEKRA, ASTA, CNAS-accredited testing, TÜV, DNV, CQC, China Energy Conservation Certification, and ISO management system certifications. Availability depends on the specific product model, factory, standard, and project requirements.

## SECTION 1 JST POWER EQUIPMENT

Cast Resin & VPI Dry-Type Transformers

JST Power Equipment is a global transformer and electrical equipment innovator headquartered in Lake Mary, Florida, USA. With over 30 years of experience and 11 manufacturing facilities across North America, Asia, Europe, and Malaysia, JST designs and builds products to the highest quality standards.

In May 2026, JST opened a new transformer manufacturing facility in Wytheville, Virginia — strengthening local supply for US utilities and data centers.



JST Cast Resin Transformer

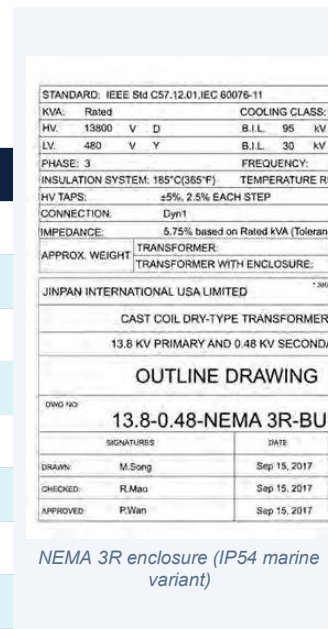
| Company Overview | Detail                                 |
|------------------|--|
| Headquarters     | Lake Mary, Florida, USA                |
| US Factories     | Lake Mary, FL · Wytheville, VA         |
| Global Factories | 11 facilities worldwide                |
| Experience       | 30+ years in transformer manufacturing |
| Revenue (2024)   | USD \$367 Million                      |
| Certifications   | UL · cUL · IEEE · IEC · ANSI           |

### 1.1 Cast Resin Dry-Type Transformers

GB1094 · IEC 60076 · UL 1562 · IEEE C57.12.01 · UL & cUL Listed

Cast Resin Transformers eliminate oil-related environmental and fire risks while offering superior reliability, lower maintenance, and operation in the harshest environments. JST is one of the world's largest Cast Resin Transformer manufacturers.

| Specification    | Value                           |
|------------------|---------------------------------|
| Max Rating       | 45 MVA · 40.5 kV · 200 kV BIL   |
| Frequency        | 50 Hz or 60 Hz                  |
| Temperature Rise | 80°C or 115°C                   |
| Insulation Class | 180°C Class H — UL Listed       |
| Windings         | Aluminum or Copper              |
| Standards        | GB1094 · IEC 60076 · UL 1562    |
| Listings         | UL Listed · cUL Listed          |
| Enclosures       | NEMA 1/3R/4/4X/12 · Marine IP54 |



NEMA 3R enclosure (IP54 marine variant)

**Impedance Ranges — Three-Phase Cast Resin**

| Primary Voltage | < 2000 kVA | ≥ 2000 kVA | Standard BIL | Optional BIL    |
|-----------------|------------|------------|--------------|-----------------|
| 4.16 kV         | 4.0 – 6.0% | 6.0 – 7.0% | 30 kV        | 45 kV / 60 kV   |
| 8.8 kV          | 4.5 – 6.5% | 6.0 – 8.0% | 45 kV        | 60 kV / 95 kV   |
| 15 kV           | 5.5 – 7.0% | 6.5 – 8.0% | 60 kV        | 95 kV / 110 kV  |
| 27 kV           | 6.5 – 7.5% | 7.0 – 8.5% | 110 kV       | 125 kV / 150 kV |
| 38 kV           | 6.5 – 7.5% | 7.0 – 8.5% | 150 kV       | 200 kV          |

**Typical Dimensions — 4160 V, NEMA 3R Enclosure**

| kVA  | Width (in) | Depth (in) | Height (in) |
|------|------------|------------|-------------|
| 250  | 78         | 60         | 94          |
| 500  | 102        | 78         | 94          |
| 1000 | 102        | 78         | 94          |
| 1500 | 120        | 78         | 94          |
| 2000 | 120        | 78         | 94          |
| 2500 | 132        | 78         | 94          |
| 3000 | 132        | 78         | 94          |



**Key Advantages**

- No oil: no containment, no fire suppression, no spill risk
- Flame-retardant, self-extinguishing — no toxic by-products
- 180°C Class H insulation for high overload handling
- Marine IP54 option: hot-galvanized steel, Dacromet hardware, Hempel C4H paint
- UL and cUL Listed for North American projects
- Low noise operation — compact construction
- Indoor / outdoor NEMA 1 through 4X enclosure options



## Enclosure Options

| Enclosure   | Description & Application   |
|-------------|---|
| NEMA 1      | Indoor general-purpose. Protection against falling dust and debris.   |
| NEMA 3R     | Indoor & outdoor. Protection against rain, sleet, snow, and ice formation.                                  |
| NEMA 4 / 4X | Watertight. Excludes 65 GPM water from 1" nozzle at 10 ft. 4X adds corrosion resistance.                    |
| NEMA 12     | Indoor. Protection against dust, falling dirt, and dripping noncorrosive liquids.                           |
| Marine IP54 | Hot-galvanized steel, Dacromet hardware, Hempel paint (SGS C4H). For offshore wind and marine applications. |

## 1.2 VPI Dry-Type Transformers (Vacuum Pressure Impregnated)

GB · IEC · ANSI/IEEE · UL standards · NOMEX® Insulation

VPI Transformers use NOMEX® insulation — compact, non-toxic, fire-resistant — creating a more uniform electric field and reducing dielectric losses. They reduce flammability concerns, require less maintenance, and do not need oil catch basins during construction.

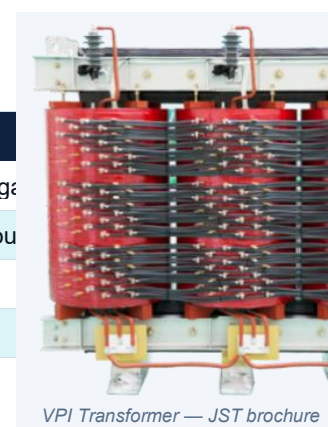
| Specification | Value                              |
|---------------|------------------------------------|
| Max Rating    | 14.5 MVA                           |
| Voltage Level | Up to 25 kV primary                |
| BIL           | Up to 110 kV                       |
| Insulation    | NOMEX® — fire & moisture resistant |
| Standards     | GB · IEC · ANSI/IEEE · UL          |
| Key Benefit   | No oil catch basins required       |

- Utility — power distribution and substation step-down
- Data Centers — IT load distribution, AI/HPC infrastructure
- Marine & Transportation — ships, rail, transit
- Renewable Energy — solar and wind power distribution



## Global Manufacturing Locations

| Region        | Locations                                       |
|---------------|---|
| North America | Orlando / Lake Mary, FL · Wytheville, VA · Noga |
| Asia          | Guilin · Haikou · Wuhan · Shanghai · Yangzhou   |
| Asia          | Surabaya, Indonesia · Klang, Malaysia           |
| Europe        | Frankfurt, Germany · Lubliniec, Poland          |



## SECTION 2 PEARL ELECTRIC

Full-Range Transformer & Substation Manufacturer — Est. 1958

### PRODUCT GALLERY



Dry Type Transformer



Oil-Immersed Distribution Transformer



Compact Substation Transformer



Pad-Mounted Transformer

|                  |                           |             |                    |                 |                     |
|------------------|---------------------------|-------------|--------------------|-----------------|---------------------|
| <b>67</b>        | <b>100K m<sup>2</sup></b> | <b>600+</b> | <b>70+</b>         | <b>200K+</b>    | <b>100K+</b>        |
| Years Experience | Factory Area              | Employees   | Countries Exported | Units Installed | New Energy Projects |

Pearl Electric (明珠电气) has been manufacturing transformers since 1958 and is headquartered in Guangzhou, China. With 67 years of experience, a 100,000 m<sup>2</sup> factory, 600+ employees, and products exported to 70+ countries, Pearl Electric serves utility, industrial, renewable energy, and data center customers worldwide — including Apple Data Centers (USA), NEOM Saudi Arabia, Shell Singapore, and 18 nuclear power plant projects.



## 2.1 Compact / Prefabricated Substations

| Specification   | Value  |
|-----------------|--|
| Capacity        | Up to 10 MVA   |
| Primary Voltage | 6 kV – 40.5 kV   |
| Transformer     | Oil-immersed or Dry-type (SF6 gas-insulated RMU available)                           |
| Included        | HV switchgear · Transformer · LV switchgear (GGD) · Metering · Reactive compensation |
| Enclosure       | IP33 or custom rating · Containerized format available                               |
| Certifications  | CE · ISO 9001 · CCC  |
| Applications    | Solar/wind farms · BESS sites · Industrial yards · EV charging hubs · Remote sites   |



Compact Prefabricated Substation

Turnkey compact substations integrating HV switchgear, transformer, LV switchboard, metering, and reactive compensation in a single weather-proof enclosure. Available in containerized format for rapid deployment on solar farms, BESS sites, and remote locations.

## 2.2 Oil-Immersed Transformers

| Specification   | Value  |
|-----------------|--|
| Capacity        | Up to 10 MVA   |
| Primary Voltage | 6 kV – 40.5 kV (12.47 kV · 13.8 kV · 34.5 kV standard for North America)           |
| Connection      | Dead-front (standard) · Live-front   |
| Feed Config.    | Loop feed or Radial feed   |
| Oil             | Mineral oil · FR3 Vegetable oil · Silicone oil                                     |
| Standards       | IEEE · ANSI · CSA · UL   |
| Certifications  | UL · cUL · CE · ISO 9001   |
| Applications    | Data centers · Commercial real estate · Residential communities · Wind/solar farms |



Oil-Immersed Distribution / Pad-Mounted

ANSI/IEEE-compliant pad-mounted transformers for underground secondary distribution. Designed for North American utility, data center, commercial real estate, and renewable energy applications with dead-front or live-front configurations.

## 2.3 Oil-Immersed Transformers

| Specification           | Value   |
|-------------------------|---|
| Capacity (Power)        | Up to 180 MVA   |
| Capacity (Distribution) | Up to 2,500 kVA   |
| Voltage Range           | 11 kV · 33 kV · 66 kV · 110 kV · 138 kV · 220 kV · 230 kV                           |
| Core                    | Silicon steel or Amorphous alloy (low-loss option)                                  |
| Oil Type                | Mineral oil · FR3 Vegetable oil · Silicone oil                                      |
| Cooling                 | ONAN / ONAF / OFAF / ODAF   |
| Standard                | IEC 60076   |
| OLTC                    | On-load tap changer available   |
| Certifications          | UL · cUL · CE · KEMA · TÜV · ISO 9001   |
| Applications            | Utility substations · Renewable interconnection · Distribution grids · Data centers |



Oil-Immersed Power Transformer

*Pearl Electric oil-immersed transformers cover both distribution-class and high-voltage power applications. Available with mineral oil, FR3 vegetable oil, or silicone oil for enhanced fire safety and environmental compatibility.*

## 2.4 Cast Resin Dry-Type Transformers

| Specification  | Value   |
|----------------|---|
| Capacity       | Up to 30 MVA  |
| Voltage        | Up to 69 kV   |
| Core           | Silicon steel or Amorphous alloy  |
| Windings       | Copper or Aluminum, fully encapsulated  |
| Enclosure      | IP00 · IP21 · IP23 · IP33 (optional)  |
| Certifications | UL · cUL · CE · KEMA · ISO 9001   |
| Applications   | Data centers · Hospitals · Commercial buildings · Transit · Underground utility |



Cast Resin Dry-Type Transformer

*Pearl Electric cast resin transformers are epoxy-encapsulated dry-type units designed for indoor and outdoor installation in environments where fire safety, low maintenance, and environmental protection are priorities.*

## SECTION 3 JIANGSU HUAPENG (JSHP)

*HV/UHV Transformers & Renewable Energy Solutions — Est. 1967*

Founded in 1967, Jiangsu Huapeng Transformer Co., Ltd. is a leading high-tech enterprise specializing in transformer manufacturing and intelligent optical storage systems. The company covers 298,400 m<sup>2</sup> and has annual production capacity of 200 million kVA. Products are exported to 77 countries and regions across North America, South America, Europe, Southeast Asia, the Middle East, and Africa.

| Company Profile | Detail  |
|-----------------|---|
| Founded         | 1967  |
| Headquarters    | Jiangsu Province, China   |
| Facility        | 298,400 m <sup>2</sup> · 200 million kVA annual capacity                  |
| Voltage Range   | 0.4 kV – 850 kV   |
| Max Capacity    | 2,400 MVA per unit  |
| Exports         | 77 countries — North America, Europe, Middle East, Africa, Southeast Asia |
| US Projects     | 10,000+ ANSI single-phase pad-mounted units/year to US communities        |
| Certifications  | IEC · ISO 9001 · ANSI   |

### 3.1 Ultra-High Voltage (UHV) Power Transformers

*500 kV – 850 kV · Up to 2,400 MVA*

| Specification  | Value  |
|----------------|--|
| Voltage Range  | 500 kV · 750 kV · 850 kV   |
| Max Capacity   | Up to 2,400 MVA  |
| Model Examples | ODFSZ10-200000/500 · ODFS13-250000/500   |
| Applications   | Transmission substations · UHV converter stations · Generation interconnection |

### 3.2 330–400 kV High-Voltage Power Transformers

*330 kV – 400 kV / 345 kV · Up to 610 MVA*

| Specification  | Value  |
|----------------|--|
| Voltage Range  | 330 kV · 345 kV · 400 kV                                   |
| Capacity Range | Up to 610 MVA  |
| Model Examples | SFPZ10-150000/330 · OSFSZ9-315000/400                      |
| Applications   | Large utility substations · IPP generation interconnection |

### 3.3 ANSI Standard Single-Phase Pad-Mounted Transformers

25 kVA – 167 kVA · 10,000+ units/year to USA

High-volume supply of ANSI-standard single-phase pad-mounted transformers to North American utilities, municipalities, and real estate developers. Huapeng supplies over 10,000 units per year to US communities and commercial centers.

| Specification  | Value  |
|----------------|--|
| Capacity Range | 25 kVA · 37.5 kVA · 50 kVA · 75 kVA · 100 kVA · 167 kVA                      |
| Standard       | ANSI C57.12  |
| Phase          | Single-phase   |
| Volume         | 10,000+ units per year to US market  |
| Applications   | Residential subdivisions · Commercial plazas · Utility distribution programs |

### 3.4 Oil-Immersed Distribution Transformers

S13-M · DS12-M / DS13-M · SH(B)15-M Amorphous Alloy

| Specification | Value   |
|---------------|---|
| Models        | S13-M · DS12-M / DS13-M · SH(B)15-M (amorphous alloy)               |
| Applications  | Utility distribution · Community distribution · Industrial campuses |
| Core Options  | Silicon steel or Amorphous alloy — 70–80% lower no-load loss        |

### 3.5 New Energy Box Transformers & Pre-Assembled Substations

Solar · Wind · BESS · Renewable EPC

| Product                   | Description   |
|---------------------------|---|
| Box Transformer           | 5,000 kVA low-frequency vegetable-oil box transformer for solar/wind step-up      |
| Inverter Booster          | 5.1 MW 40 ft container inverter booster unit — plug-and-play renewable substation |
| Pre-Assembled Substation  | Wind and solar pre-assembled substations — integrated, fast-deployment design     |
| Combined Wind Transformer | Combined transformer for wind power — nacelle and tower-base variants             |
| Offshore                  | S-8200/35 offshore nacelle transformer for offshore wind turbines                 |

## SECTION 4 DELTA ELECTRONICS

### Data Center Power Distribution Infrastructure

Delta Electronics is a global leader in power management and thermal management solutions. Its data center power distribution product line — including PDUs, rPDUs, busway systems, and rack remote power panels — complements transformer and switchgear packages for complete data center electrical infrastructure sourcing from Crown Mountain Solutions.

### 4.1 Data Center Power Distribution Unit (PDU)

*Medium-to-Large Data Centers*

| Specification | Value  |
|---------------|--|
| Type          | Cabinet-level data center PDU  |
| Features      | Space-saving · Movable · Superior protection and monitoring · Future-scalable  |
| Function      | Distributes power from UPS / transformer / switchgear to IT loads              |
| Applications  | Medium-to-large data centers · Colocation facilities · Enterprise server rooms |

### 4.2 Rack PDU — rPDU ViLink & ViFlow Series

*Intelligent Rack-Level Power Distribution*

| Specification | Value  |
|---------------|--|
| Series        | ViLink Series · ViFlow Series  |
| Function      | Rack-level power distribution and monitoring for servers and network devices |
| Features      | Built-in protection · Intelligent management · Steady reliable power flow    |
| Applications  | Data centers · AI / HPC server racks · Enterprise IT rooms                   |

### 4.3 Cast Resin Busway Systems — BR & BL Series

*250 A – 6,400 A*

| Specification | Value   |
|---------------|---|
| BR Series     | 250 A – 2,000 A   |
| BL Series     | 400 A – 6,400 A   |
| Material      | Epoxy cast resin — improved ingress protection, safety, and reliability |

| Specification | Value  |
|---------------|--|
| Function      | High-current power distribution inside data centers, industrial facilities, and commercial buildings |
| Applications  | Data center electrical rooms · Manufacturing facilities · High-density power distribution            |

## 4.4 Rack-Mount Remote Power Panel (rRPP)

40 kVA & 80 kVA

| Specification | Value   |
|---------------|---|
| Ratings       | 40 kVA · 80 kVA   |
| Form Factor   | Rack-mount  |
| Function      | Compact branch power distribution and monitoring for high-density rack environments |
| Applications  | Small data centers · Server rooms · Network closets                                 |

## SECTION 5 CMS SALES PACKAGES & HOW TO ORDER

Bundled Solutions · 72-Hour Quote Turnaround

Crown Mountain Solutions offers bundled supply packages that combine products across manufacturers to deliver complete electrical infrastructure solutions with a single point of contact.

| Package                     | Included Products   | Target Customer                         |
|-----------------------------|---|---|
| Data Center Power Intake    | HV/MV transformer + Cast Resin / VPI dry-type (JST) + MV switchgear + Delta PDU / rPDU / Busway | Data centers · Colocation · AI/HPC      |
| Utility Distribution        | Pad-mounted transformer (Pearl / Huapeng) + Oil-immersed distribution transformer + Switchgear  | Utilities · Municipalities · Developers |
| Renewable Energy Booster    | Step-up transformer + Compact substation + New energy box transformer + BESS interface          | Solar / Wind EPCs · IPPs                |
| EV Charging Infrastructure  | Distribution transformer + Compact substation + PDU / power distribution equipment              | EV charging operators · Fleet depots    |
| Industrial Facility Package | Cast Resin or VPI dry-type (JST) + Switchgear + Busway (Delta)                                  | Industrial plants · Factories           |

## How to Order / Request a Quote

| Step | Action  |
|------|---|
| 1    | Send your project specifications, one-line drawings, or RFQ to <a href="mailto:info@crownmntns.com">info@crownmntns.com</a>       |
| 2    | CMS reviews requirements: voltage, capacity, standards, certifications, delivery location, and timeline                           |
| 3    | CMS matches your project with the optimal manufacturer and configuration from our partner network                                 |
| 4    | CMS returns a commercial and technical quote within 72 hours for standard configurations  |
| 5    | Upon order placement: CMS coordinates production, factory acceptance testing, export documentation, logistics, and final delivery |

### North American Standards Notes

- All products can be ordered to IEEE / ANSI / UL / CSA standards as required for US and Canadian projects.
- Pad-mounted transformers for North America require dead-front or live-front, loop / radial feed specification at time of order.
- UL and cUL listings are available on JST Cast Resin transformers and Pearl Electric pad-mounted transformers.
- CSA approval is available for Canadian projects — please specify at inquiry stage.
- NERC / utility interconnection design review and local engineering support can be arranged upon request.

### Contact Crown Mountain Solutions

| Contact   | Detail   |
|-----------|--|
| Website   | <a href="http://www.crownmntns.com">www.crownmntns.com</a>   |
| Email     | <a href="mailto:info@crownmntns.com">info@crownmntns.com</a> |
| Phone     | +1 (915) 200-6779  |
| Office    | 5900 Balcones Drive STE 100, Austin, TX 78731, USA           |
| Hours     | Monday – Friday, 8:00 AM – 6:00 PM CT                        |
| Quote SLA | 72-hour response target for standard RFQs                    |

**Time Is Money. We Deliver.**

Crown Mountain Solutions · [www.crownmntns.com](http://www.crownmntns.com)