

— TRANSFORMER &amp; ELECTRICAL EQUIPMENT SOLUTIONS — NORTH AMERICA

# Powering North America with **Reliable Energy** & Advanced Technology

Crown Mountain Solutions is a North America-focused supply and solutions company connecting leading Chinese manufacturers with utilities, data centers, industrial operators, and advanced technology companies across the United States and Canada. Built on 30+ years of deep industry relationships and cross-border execution capabilities.

POWER TRANSFORMERS

PDU &amp; DATA CENTER

EV CHARGING

4G / 5G MODULES

AUTOMOTIVE CHIPS

SMART MOBILITY

**30+**

Years of Expertise

**72h**

Quote Turnaround

**500+**

Projects Delivered

**3**

Continents Served

— ABOUT US

# Bridging Asia's Manufacturing Strength with **North American Demand**

Crown Mountain Solutions bridges the gap between Asia's advanced manufacturing capacity and North America's growing demand for reliable power infrastructure and intelligent technology solutions.

As energy demand accelerates across data centers, utilities, EV charging networks, industrial facilities, robotics, autonomous driving, and IoT applications, supply reliability has become a critical business advantage.

We leverage 30+ years of manufacturing relationships in China, local business experience in North America, and a deep understanding of power and technology supply chains to provide dependable sourcing, faster delivery, and practical end-to-end support.

*"We are not only a supplier. We are a cross-border execution partner."*

<p><b>2</b> Product Lines</p>	<p><b>72h</b> Quote Turnaround</p>	<p><b>500+</b> Projects Delivered</p>	<p><b>3mo</b> Target Delivery*</p>
-----------------------------------	--	---	--

\*Qualified projects, subject to specs, certification, customs & logistics.



Power infrastructure — Crown Mountain core supply focus

## Our Core Strengths

- ◆ **Deep Access** to China's power equipment & semiconductor supply chains
- ◆ **Trusted Network** of qualified manufacturers and industry partners
- ◆ **North American Presence** — Austin, TX office with customer-facing service
- ◆ **Fast Procurement** — logistics coordination and project delivery support
- ◆ **Mission-Critical Focus** — utilities, data centers, robotics, autonomous driving, IoT

## — OUR FOUNDERS

## Leadership Built on Industry Experience & Cross-Border Execution

### BINZHI "Clement" SUN

CO-FOUNDER · POWER & ELECTRICAL EQUIPMENT

Mr. Binzhi Sun brings 30+ years of experience in China's power and electrical equipment industry. A graduate of **Huazhong University of Science and Technology**, Mr. Sun has worked with leading companies including **Huawei** and **TBEA**, building strong expertise across power systems, industrial sales, and strategic customer development.

He has served in senior regional sales leadership roles and developed deep relationships within China's domestic power grid ecosystem, giving Crown Mountain Solutions access to reliable production capacity, competitive sourcing, and fast project coordination.

30+ Yrs Power Industry   Huawei · TBEA   Industrial Sales   China Supply Chain   HUST Graduate

### ZIMENG "Brandon" MING

CO-FOUNDER · TECHNOLOGY & NORTH AMERICAN OPERATIONS

Brandon brings extensive experience in **Canada's public-sector and Crown corporation environment**, with strong understanding of North American business operations, compliance expectations, technology systems, and customer communication.

His family business has deep expertise in **chip modules and advanced technology solutions** — especially optical communication, autonomous driving, IoT, and connected hardware. Brandon maintains strong relationships with technology suppliers in China, connecting high-quality products with North American market opportunities.

Canada Crown Corp.   Chip & Modules   Autonomous Driving   IoT Solutions   North America Ops



Together, the Crown Mountain Solutions leadership team combines **deep Chinese manufacturing access** with **North American market understanding** — a rare combination that gives customers faster execution, stronger supplier relationships, and reduced supply-chain risk.

— OUR ADVANTAGE

# The Right Equipment. The Right Manufacturer. The Right Timeline.

North America is facing increasing pressure on power infrastructure and advanced technology supply chains. Utilities, data centers, EV charging operators, and industrial customers need reliable equipment, predictable delivery, and trusted suppliers who move faster than traditional procurement channels.

Crown Mountain Solutions combines China's manufacturing strength with North American market understanding and local execution support — speed is our competitive edge.



### Fast Delivery Commitment

Target on-site delivery within 3 months for qualified projects. Standard units ship within days. 72-hour quote turnaround on all inquiries.



### Trusted Manufacturer Network

Priority production-line access with proven tier-1 manufacturers across power equipment, chip modules, and smart technology.



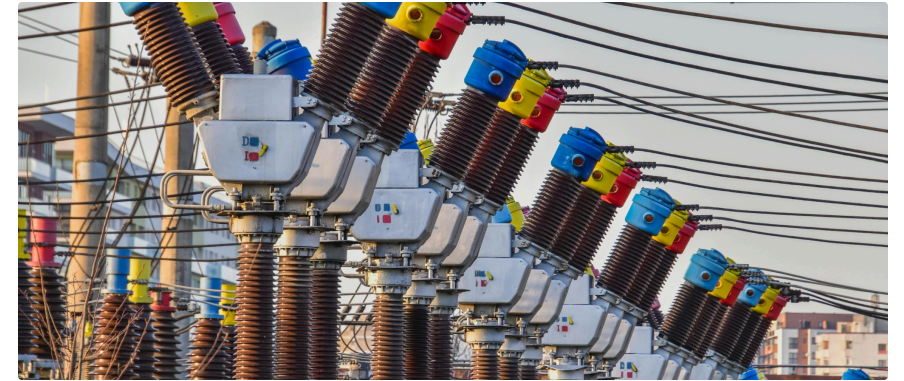
### Cross-Border Execution

We bridge Chinese manufacturing culture and North American expectations — reducing communication gaps and project delays.



### Technical Understanding

ANSI/IEEE/CSA certified equipment. Our team understands utility specs, data center infrastructure, EV, robotics, and IoT deployment.



Power transformers — Crown Mountain primary product focus

### Target Markets

- Electric Utilities
- Data Centers & Colo
- Renewable Energy
- EV Charging
- Industrial Facilities
- EPC Contractors
- Robotics
- Autonomous Driving
- IoT Hardware
- Smart Mobility

### OUR NETWORK

- Austin, TX — Primary US Operations
- Vancouver, BC — Canadian Market
- China — Manufacturing & Sourcing Hub

— FOUR CORE PRODUCT FAMILIES

# Power & Electrical Equipment

We source certified, project-ready power infrastructure from China's most established manufacturers — connecting North American utilities, data centers, EV operators, and EPCs with reliable equipment and faster delivery than traditional procurement channels.



## HV / MV Power Transformers

Oil-immersed, up to **180 MVA / 230 kV** (Pearl Electric). Large-scale transmission up to **2,400 MVA / 850 kV** (Huapeng). JST: **5-100 MVA, 171 kV**, IEEE / ANSI / IEC. Mineral, FR3 vegetable & silicone oil options. OLTC available.



## Pad-Mounted & Distribution

Single & 3-phase pad-mounted up to **10 MVA, 34.5 kV**. Distribution up to **2,500 kVA, 35 kV** - sealed corrugated tank, amorphous alloy or silicon steel core. ANSI 1-phase: **25-167 kVA**. Dead-front / loop-feed available.



## Dry-Type & Cast Resin

Fire-safe indoor transformers up to **30 MVA, 69 kV**. Amorphous alloy option delivers **70-80% lower no-load loss** vs. silicon steel. IP00-IP33 enclosure. Ideal for data centers, hospitals, transit, underground & indoor utility rooms.



## Switchgear, Substation & PDU

MV GIS switchgear **5-69 kV, UL listed** (JST J10N/J20N/J10X/J20X). Compact substations up to **10 MVA, 40.5 kV**. Delta rPDU ViLink / ViFlow, busway **BR 250-2,000 A · BL 400-6,400 A**, rRPP 40 / 80 kVA.



PRODUCT SHOWCASE

## High-Voltage Transformers & Substations

— REFERENCE PROJECTS

- US Apple Data Centers - USA**  
HV oil-immersed transformers (Pearl Electric) supplied to hyperscale data center facilities across multiple US states.
- SA NEOM Megaproject - Saudi Arabia**  
Pearl Electric transformers deployed for the world's largest infrastructure development, meeting high reliability standards.
- US Salem Electric Cooperative - Oregon**  
JST Power supplied MV switchgear and field installation support to a 20,000+ member utility cooperative.
- SG Shell Singapore & Nuclear Facilities**  
Pearl Electric HAF003-certified nuclear-grade transformers active in 18 nuclear power stations globally.
- US 1,000+ ANSI Pad-Mounted / Year - USA**  
Huapeng supplies ANSI single-phase pad-mounted units annually to US communities and commercial centers.

PARTNER · EST. 1958

### Pearl Electric

Guangzhou · 660 employees · 90,000 m<sup>2</sup> · UL/IEC/IEEE certified

- UL
- CUL
- IEC 60076
- HAF003

PARTNER · N. AMERICA FOCUS

### JST Power

Florida HQ + Virginia factory · \$367M sales (2024) · UL listed

- UL Listed
- ANSI
- IEEE
- NEMA

PARTNER · EST. 1967

### Jiangsu Huapeng

200M kVA annual capacity · 77 countries exported · 1,000+ ANSI pads/yr to USA

- IEC
- ISO 9001
- ANSI

850kV

Max Voltage

2,400

MVA Capacity

10K+

ANSI Units/yr

77

Export Countries

— ADVANCED TECHNOLOGY

# Chips · 4G/5G Modules · Automotive & IoT Solutions

Crown Mountain Solutions connects North American technology companies with advanced chip modules, communication hardware, and intelligent mobility solutions from China's fast-growing semiconductor ecosystem.

## Featured Manufacturing Partners

### SGMicro · 圣邦微电子

#### AUTOMOTIVE-GRADE ANALOG & POWER MANAGEMENT ICs

Leading Chinese analog semiconductor manufacturer specializing in automotive-grade power management ICs, gate drivers, LDOs, op-amps, and signal chain chips. All products meet AEC-Q100 automotive qualification, serving ADAS, BMS, EPS, and smart cockpit applications.

- Gate Drivers
- LDO Regulators
- Power Management
- Op-Amps
- ADAS
- BMS Chips
- AEC-Q100

### Novosns · 纳芯微

#### AUTOMOTIVE SENSORS · SIGNAL CHAIN · ISOLATION ICs

China's leading automotive sensor and isolation chip manufacturer. Products include magnetic sensors, pressure sensors, current sensors, isolation amplifiers — critical for EV powertrains, autonomous driving systems, and industrial IoT applications.

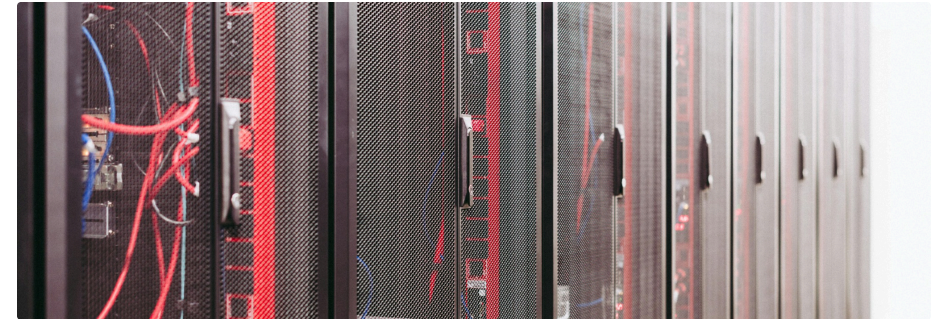
- Magnetic Sensors
- Isolation ICs
- Current Sensors
- Pressure Sensors
- Signal Chain
- AEC-Q100

### IoT Communication Modules

#### 4G LTE · 5G NR · V2X · FUTURE 6G

Industrial-grade cellular and V2X modules for IoT devices, connected vehicles, robotics, and smart infrastructure. North American carrier certified, supporting global frequency bands.

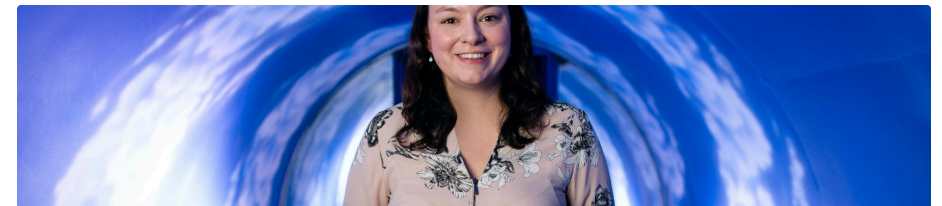
- 4G LTE Cat-M
- 5G NR
- V2X / DSRC
- GNSS Integration
- Edge AI Ready



Advanced semiconductor modules — technology focus area

## Application Areas

- ◆ **Autonomous Driving** — ADAS sensors, radar signal chain, lidar interface chips
- ◆ **EV Powertrain** — BMS ICs, gate drivers, current/voltage sensing
- ◆ **Smart Cockpit** — display drivers, power management, connectivity
- ◆ **Industrial IoT** — cellular modules, edge compute, sensor ICs
- ◆ **Robotics** — motion control ICs, comms modules, isolation chips
- ◆ **V2X Connectivity** — vehicle-to-everything communication hardware



Smart vehicle & autonomous mobility

— HOW WE WORK

# End-to-End Support. From Spec to Delivery.

Crown Mountain Solutions provides more than product sourcing. We support customers through a practical end-to-end process designed to reduce procurement uncertainty and improve project execution speed.

- 1 Requirement Review**  
 We review customer specifications, application scenarios, technical drawings, certification requirements, target delivery dates, and budget expectations before sourcing begins.
- 2 Manufacturer Matching**  
 We identify suitable manufacturers from our trusted network, matching the project with the right production capability, certifications, and North American standards compliance.
- 3 Commercial & Technical Coordination**  
 We coordinate pricing, technical clarification, specification alignment, production planning, factory acceptance testing, inspection requirements, and delivery schedules.
- 4 Logistics & Delivery Support**  
 We support cross-border logistics, customs documentation, bonded warehousing in Austin TX, shipping arrangements, and final delivery — door to door.



*Cross-border logistics and supply chain coordination*

## Service Scope

- ◆ **Procurement & Sourcing** — right manufacturer, right price, fast timeline
- ◆ **Technical Consulting** — spec review, standards compliance, system integration
- ◆ **Project Management** — timeline protection and milestone tracking
- ◆ **Logistics & Customs** — door-to-door, bonded warehouse Austin, TX
- ◆ **Testing & Certification** — FAT, third-party inspection, ANSI/IEEE/CSA
- ◆ **After-Sale Support** — warranty coordination, spare parts, field support

***"Protect your project timeline and reduce supply-chain risk."***

## — CONTACT US

# Let's Build Reliable Supply Chains for North America

Crown Mountain Solutions is ready to support utilities, data centers, industrial operators, EV charging developers, robotics companies, autonomous mobility teams, and IoT hardware companies with reliable sourcing and faster delivery. We typically respond within 24 hours.



## WEBSITE

[www.crownmntns.com](http://www.crownmntns.com)



## EMAIL

[info@crownmntns.com](mailto:info@crownmntns.com)



## PHONE

+1 (915) 200-6779



## US OFFICE

5900 Balcones Drive STE 100  
Austin, TX 78731, USA

**⚡ "Time Is Money. We Deliver."**

## POWER EQUIPMENT

Transformers · PDU · EV



## SMART TECHNOLOGY

Chips · 5G · Automotive

## OPERATIONS

USA · Canada · China

## SUPPLY NETWORK

-  Austin, TX — US Operations & Bonded Warehouse
-  Vancouver, BC — Canada Office & Market
-  Guangzhou / Shenzhen — Sourcing Hub

# 72h

Quote Turnaround Guarantee